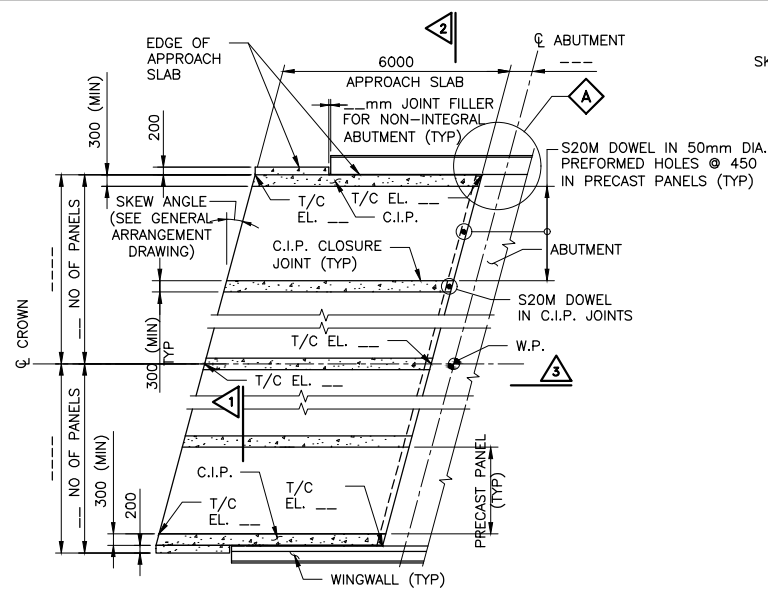


CONT  
WP

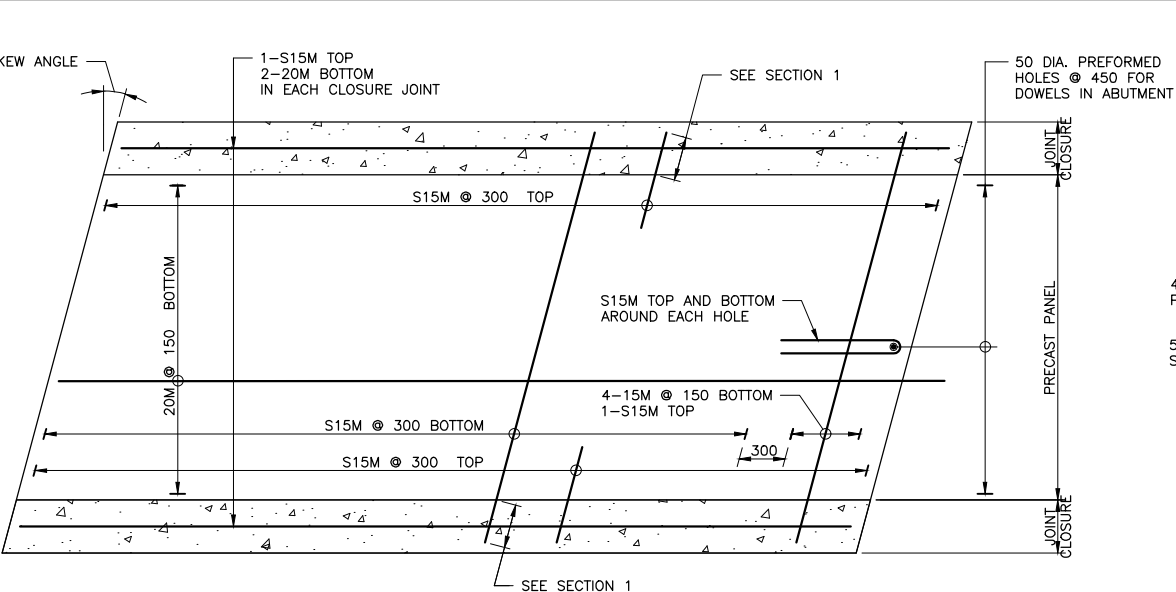
PROJECT NAME  
PRECAST APPROACH SLAB

SHEET  
-

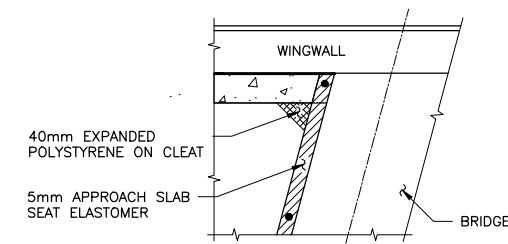
METRIC  
MILLIMETRES OR  
METRES  
(UNLESS NOTED)



PLAN  
SCALE 1:100



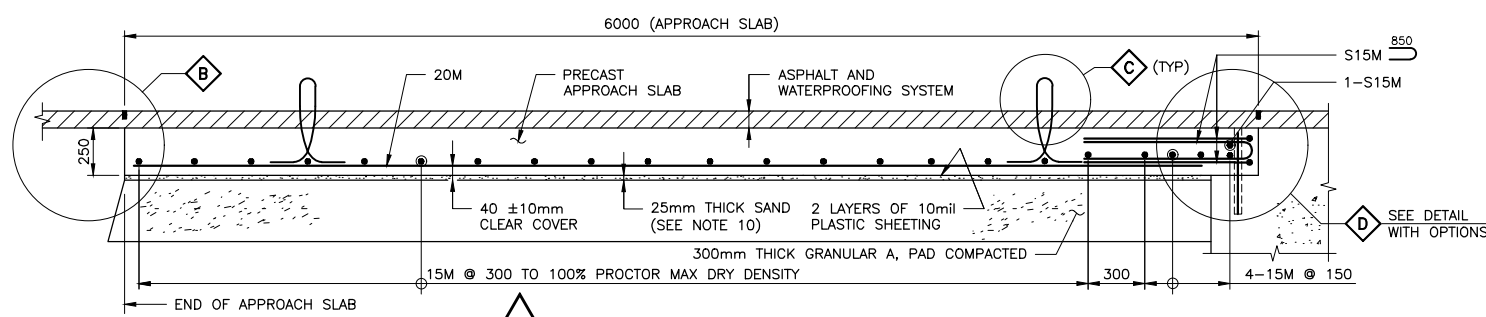
TYPICAL PANEL PLAN  
(REINFORCING)



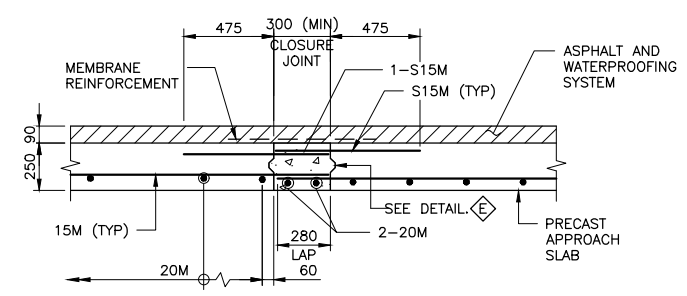
DETAIL CLEAT

SCALE 1:40

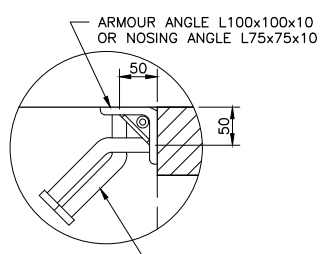
- NOTES:**
- SPECIFIED 28-DAY CONCRETE COMPRESSIVE STRENGTH 35 MPa.
  - CLEAR COVER TO REINFORCING STEEL SHALL BE 70±20mm EXCEPT AS NOTED.
  - LAYOUT OF REINFORCING STEEL WILL BE SIMILAR FOR LEFT HAND AND ZERO DEGREE SKEW.
  - REINFORCING STEEL SHALL BE GRADE 500W. STAINLESS STEEL BARS SHALL BE TYPE 316 LN OR DUPLEX 2205 WITH A MINIMUM YIELD STRENGTH OF 500 MPa.
  - WATERPROOFING AT JOINT BETWEEN BRIDGE AND APPROACH SLAB TO BE IN ACCORDANCE WITH OPSD 3370.100.
  - WATERPROOFING FOR BRIDGES WITHOUT EXPANSION JOINTS (RIGID FRAMES OR INTEGRAL ABUTMENTS) TO BE IN ACCORDANCE WITH OPSD 3370.101.
  - TRANSVERSE REINFORCING BARS SHALL BE OFFSET BETWEEN ADJACENT PRECAST PANELS TO FACILITATE PLACEMENT.
  - ALL LIFTING INSERTS SHALL BE RECESSED AND GALVANIZED. CUT ENDS OF LIFTING INSERTS SHALL BE TREATED WITH GALVAN-GUARD OR APPROVED EQUIVALENT PRIOR TO PARGING AND SHALL BE PARGED AFTER ERECTION WITH SIKUDUR AC GROUT OR APPROVED EQUIVALENT.
  - APPROACH SLABS SHALL BE WATERPROOFED AND PAVED. ALL JOINTS SHALL HAVE WATERPROOFING MEMBRANE REINFORCEMENT.
  - 25mm THICK LAYER OF SAND SHALL BE PLACED OVER THE GRANULAR "A" BACKFILL WITH HAND RACKING TO PROVIDE SCREENED EVEN SURFACE FOR APPROACH SLAB INSTALLATION.
  - DETAILS AND LOCATIONS OF LIFTING DEVICE SHALL BE DESIGNED BY THE CONTRACTOR.
  - 50mm DIAMETER HOLES FOR DOWELS SHALL BE FILLED WITH 20 MPa NON SHRINK GROUT ONCE THE DOWELS ARE PLACED AND CENTERED IN THE HOLES.
  - BARS MARK WITH PREFIX S DENOTE STAINLESS STEEL BARS.



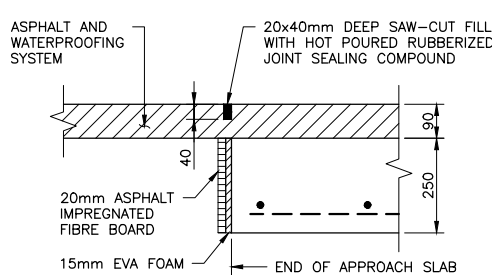
LONGITUDINAL SECTION  
SCALE 1:20



SECTION AT CLOSURE JOINT  
SCALE 1:20

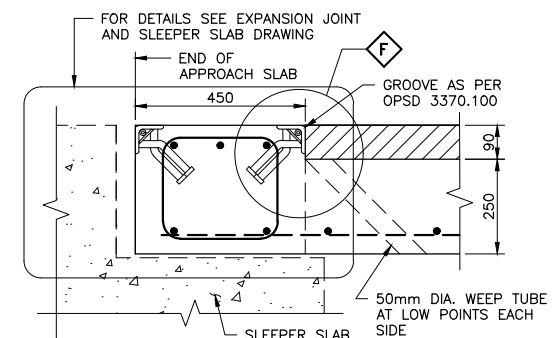


SCALE 1:5

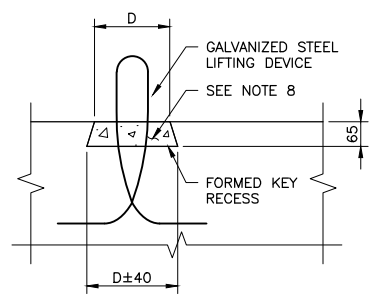


WITHOUT SLEEPER SLAB

SCALE 1:10

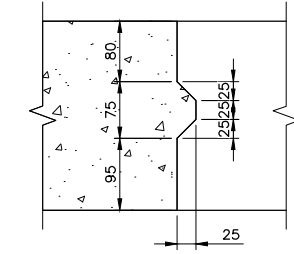


WITH SLEEPER SLAB



STEEL LIFTING DEVICE

SCALE 1:10



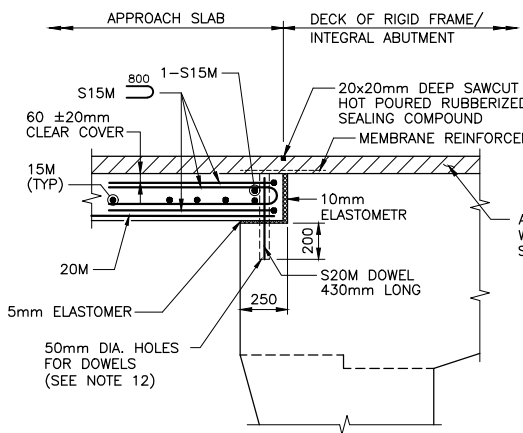
SCALE 1:5

- NOTES TO DESIGNER:**
- THE WIDTH OF PRECAST PANEL SHOULD BE AS CLOSE AS POSSIBLE TO BUT NOT EXCEED 3500mm.
  - REINFORCING IN THE C.I.P. CONCRETE JOINT IS PROVIDED FOR 300mm WIDE JOINTS. REVISE THE REINFORCING IF THE ACTUAL WIDTH OF THE JOINT IS WIDER.
  - THE "NOTES TO DESIGNER" SHALL BE DELETED FROM THIS DRAWING PRIOR TO ISSUING OF THE CONTRACT.

- APPLICABLE STANDARD DRAWINGS**
- |               |   |
|---------------|---|
| OPSD 3370.100 | DECK, WATERPROOFING HOT APPLIED ASPHALT MEMBRANE WITH PROTECTION BOARD  |
| OPSD 3370.101 | DECK, WATERPROOFING HOT APPLIED ASPHALT MEMBRANE AT ACTIVE CRACKS GREATER THAN 2mm WIDE AND CONSTRUCTION JOINTS |

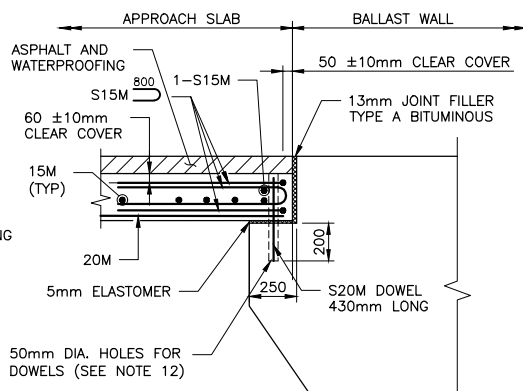
REFER TO THE STRUCTURAL MANUAL FOR PROFESSIONAL ENGINEER STAMPING REQUIREMENTS

STANDARD DRAWING  
JAN. 15, 2024  
PRECAST APPROACH SLAB

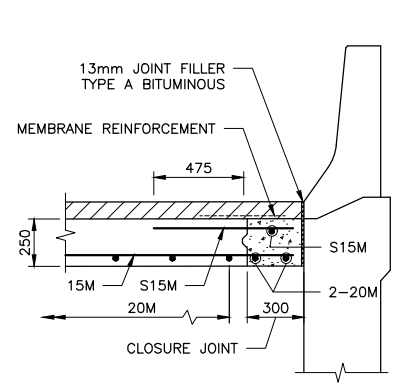


FOR BRIDGES WITHOUT EXPANSION JOINTS

SCALE 1:20

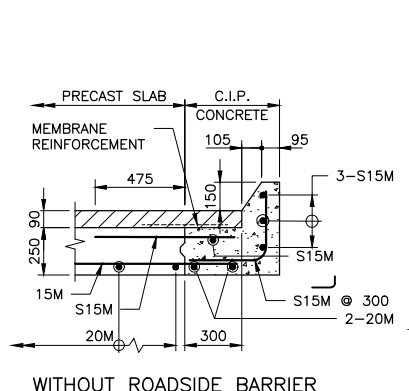


FOR BRIDGES WITH EXPANSION JOINTS



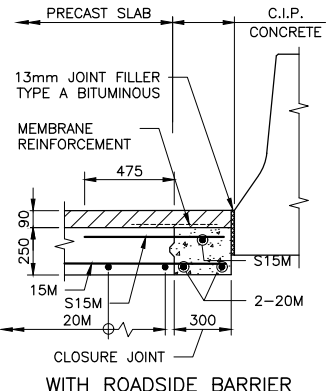
SECTION AT WINGWALL

SCALE 1:20



WITHOUT ROADSIDE BARRIER

SCALE 1:20



WITH ROADSIDE BARRIER

SCALE 1:20

REVISIONS	DATE	BY	DESCRIPTION

FILE NAME: C:\USERS\WANGMAD\ONEPDRIVE - GOVERNMENT OF ONTARIO\DESKTOP\SEBNA\SS105-16\SS105-16 DEC 7 2023.DWG  
MODIFIED: 2024-04-03 14:05