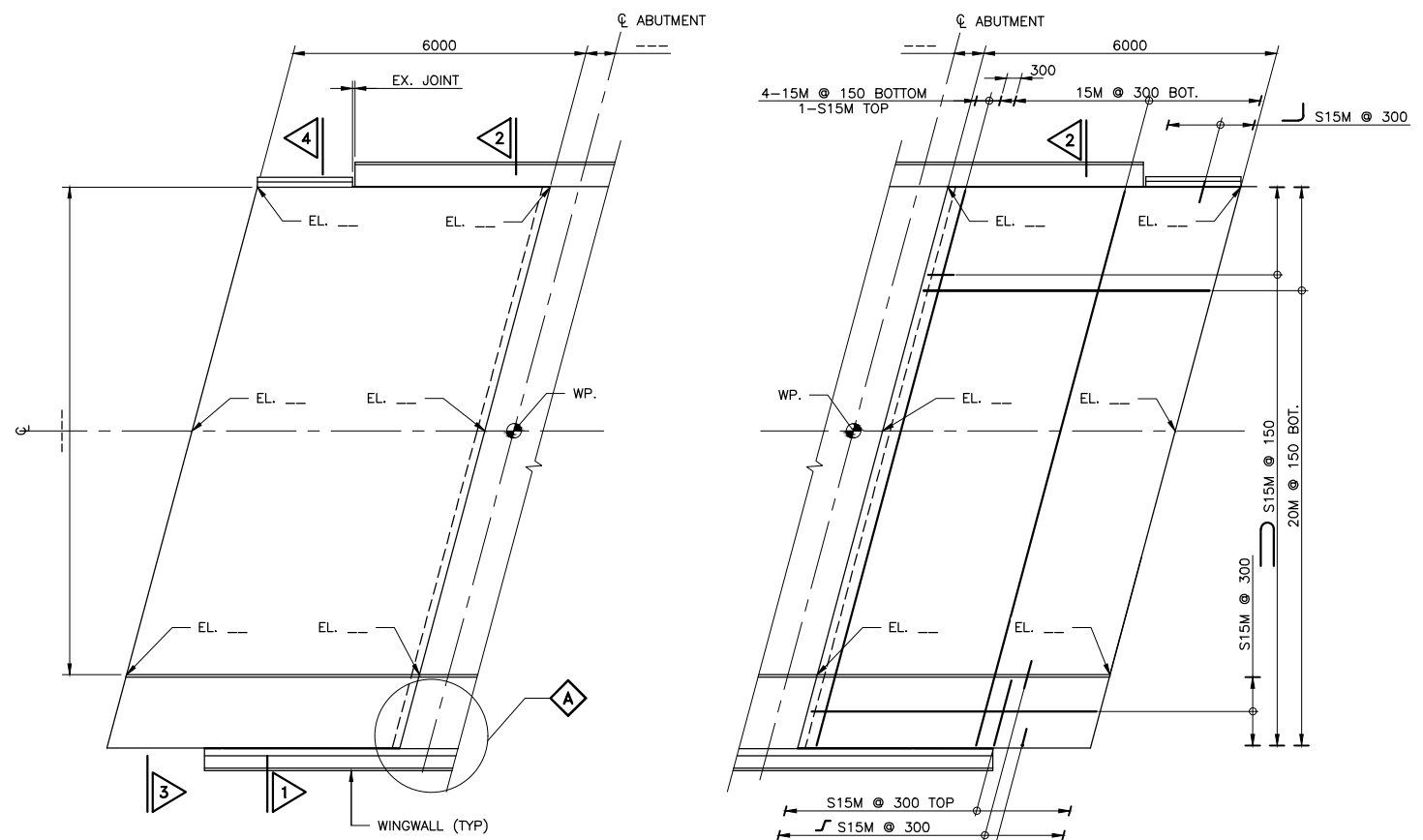


FILE NAME: C:\Users\WangMaZ\OneDrive - Government of Ontario\Desktop\Chris\SS116\SS105-15\SS105-15.dwg  
 MODIFIED: 2024-03-01 09:44  
 MINISTRY OF TRANSPORTATION, ONTARIO  
 ANS-D  
 2017-08

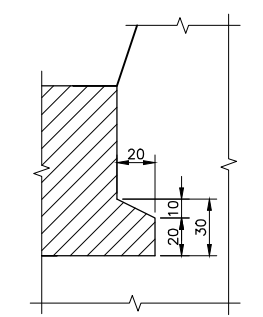
**Ontario** Ministry of Transportation  
 CONT WP **DRAFT**  
 SHEET  
**APPROACH SLAB**

**METRIC**  
 DIMENSIONS ARE IN METRES AND/OR MILLIMETRES UNLESS OTHERWISE SHOWN  
 DRAWING NOT TO BE SCALED  
 100mm ON ORIGINAL DRAWING

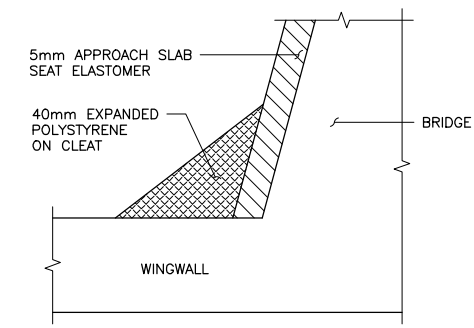


**PLAN**  
SCALE 1:75

NOTE: REINFORCING STEEL SIMILAR AT BOTH APPROACH SLABS



**C CHASE DETAIL**  
SCALE 1:2



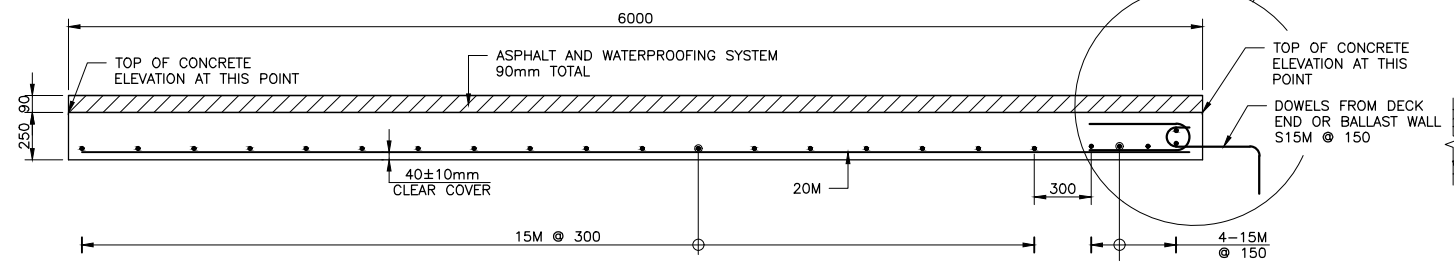
**A DETAIL AT CLEAT**  
SCALE 1:20

**NOTES:**

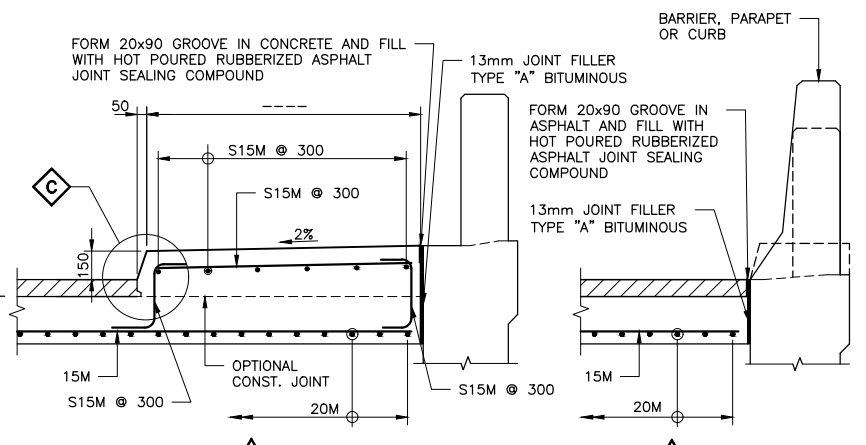
- CLEAR COVER TO REINFORCING STEEL 70 ± 20mm EXCEPT AS NOTED.
- REINFORCING STEEL SHALL BE GRADE 500W UNLESS SHOWN OTHERWISE ON GENERAL ARRANGEMENT.
- STAINLESS STEEL BARS SHALL BE TYPE 316 LN OR DUPLEX 2205 WITH A MINIMUM YIELD STRENGTH OF 500 MPa. REINFORCING STEEL SHALL BE GRADE 500W.
- WATERPROOFING AT JOINT BETWEEN BRIDGE AND APPROACH SLAB TO BE IN ACCORDANCE WITH OPSD 3370.100.
- DIMENSION "A" SHALL BE 50mm FOR TRANSITION BETWEEN SIDEWALK OR CURB ON BRIDGE TO CURB AND GUTTER AT APPROACH AND 105mm FOR TRANSITION FROM CONCRETE SAFETY-SHAPE BARRIER ON BRIDGE TO STEEL BEAM GUIDE RAIL AT APPROACHES.

**APPLICABLE STANDARD DRAWINGS:**

- OPSD 3370.100 DECK, WATERPROOFING HOT APPLIED ASPHALT MEMBRANE WITH PROTECTION BOARD.
- OPSD 3370.101 DECK, WATERPROOFING HOT APPLIED ASPHALT MEMBRANE AT ACTIVE CRACKS GREATER THAN 2mm WIDE AND CONSTRUCTION JOINTS.



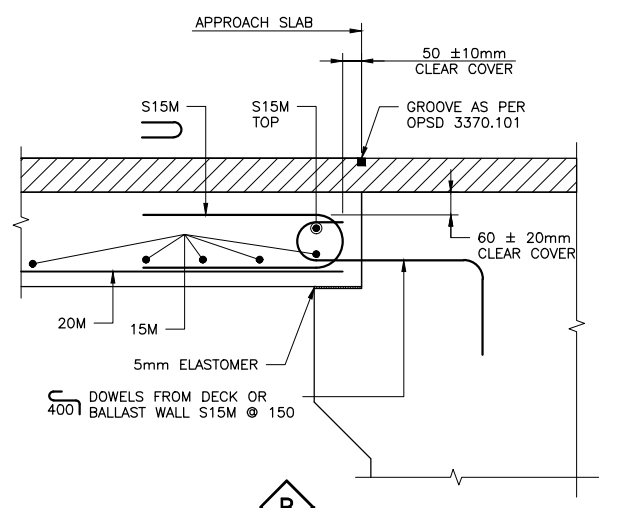
**LONGITUDINAL SECTION**  
SCALE 1:20



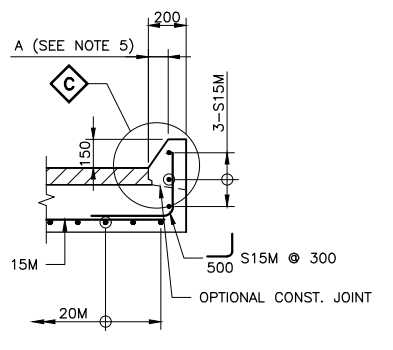
**1 WITH SIDEWALK**  
**2 WITHOUT SIDEWALK**  
**SECTION BESIDE WINGWALL**  
SCALE 1:20

**NOTES TO DESIGNER:**

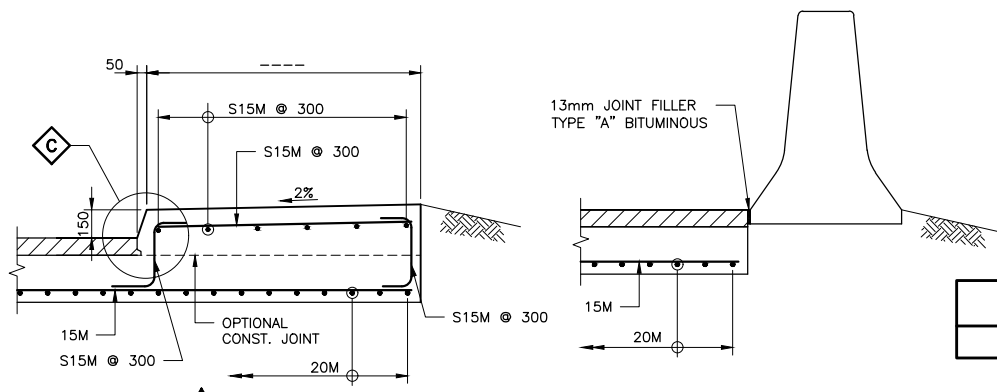
- THIS STANDARD APPLIES TO APPROACH SLABS SUPPORTED ON THE BALLAST WALL FOR BRIDGES WITH CONVENTIONAL ABUTMENTS AND APPROACH SLABS WITH MOVEMENT < 10mm AT END OF APPROACH SLABS.
- UPDATE PLAN TO REFLECT PARAPET WALL, BARRIER WALL, CURB, OR SIDEWALK AT EDGES OF APPROACH SLAB.
- UPDATE THE BARRIERS IN THE SECTION VIEWS TO MATCH THE BARRIERS USED ON THE BRIDGE.
- FOR SKEW GREATER THAN 20°, SPECIFY THE APPROACH SLAB LENGTH.
- SPECIFY TOP OF CONCRETE ELEVATIONS AT ALL TRANSITIONS IN CROSS-FALL.
- TO MEET REQUIREMENT OF THE ACCESSIBILITY FOR ONTARIANS WITH DISABILITIES ACT, 2005, WIDTH OF SIDEWALK FREE OF ANY LONGITUDINAL JOINT SHALL BE MINIMUM OF 1500mm.
- DELETE SECTIONS THAT DO NOT APPLY.
- 'NOTES TO DESIGNERS' SHALL BE DELETED PRIOR TO ISSUING THE CONTRACT.
- CHASE NOT REQUIRED WHERE APPROACH SLAB IS NOT WATERPROOFED.



**B**  
SCALE 1:10



**4 WITHOUT SIDEWALK**



**3 WITH SIDEWALK**

**SECTION BEYOND WINGWALL**  
SCALE 1:20

REFER TO IN THE STRUCTURAL MANUAL FOR PROFESSIONAL ENGINEER STAMPING REQUIREMENTS

STANDARD DRAWING JANUARY 2024  
**SS105-15**  
**APPROACH SLAB**

REVISIONS		DATE	BY	DESCRIPTION
DESIGN	CHK	CODE	CSA S6-19	LOAD
DRAWN	CHK	SITE		DATE
				DWG