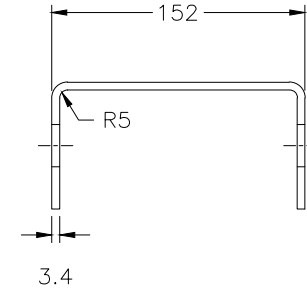
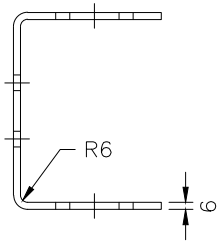


FRONT VIEW

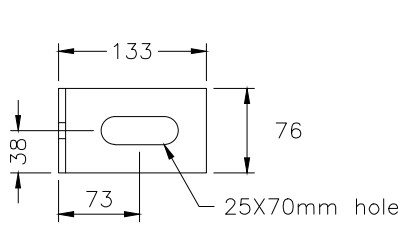


SIDE VIEW

GROUND STRUT ASSEMBLY

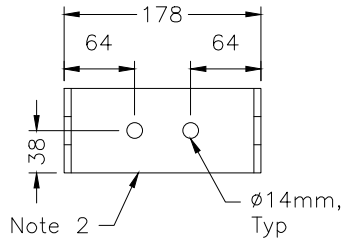


PLAN

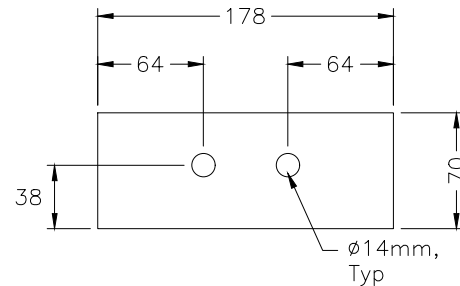


ELEVATION

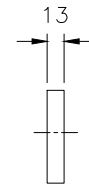
DETAIL A



SIDE VIEW



ELEVATION



SIDE VIEW

DETAIL B

NOTES:

- 1 ASTM A36 1689x298x3.4mm bent steel channel strut shall be according to ASTM A123.
- 2 ASTM A36 432x76x6mm bent steel plate shall be according to ASTM A123.
- 3 ASTM A36 178x70x13mm steel plate shall be according to ASTM A123.
- A All dimensions subject to manufacturing tolerances unless otherwise indicated.
- B All dimensions are in millimetres unless otherwise shown.

MINISTRY OF TRANSPORTATION ONTARIO DRAWING		April 2021	Rev	0
<p>GUIDE RAIL SYSTEM, STEEL BEAM STEEL POST TERMINAL ANCHORAGE GROUND STRUT COMPONENTS</p>		-----		
		<p>MTOD 912.264</p>		