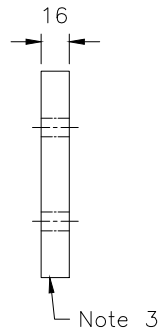
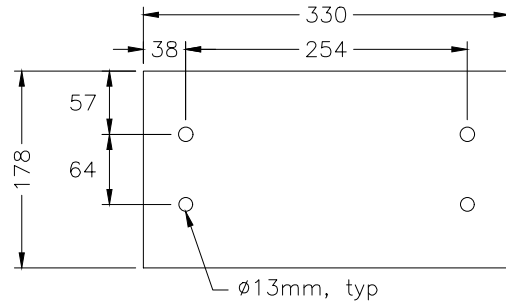


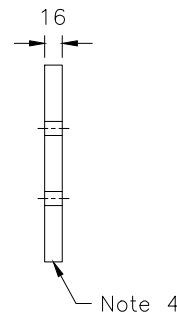
ELEVATION



SECTION C-C



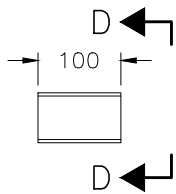
FRONT VIEW



SIDE VIEW

DETAIL C

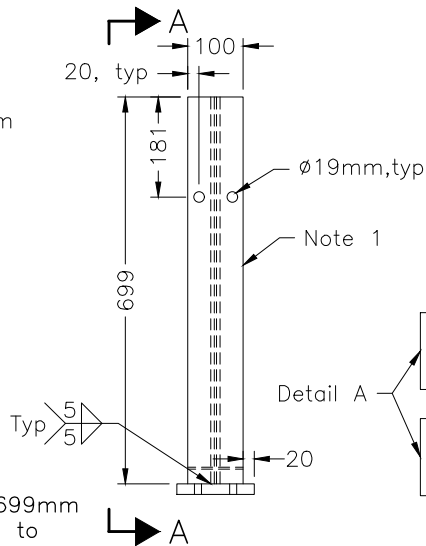
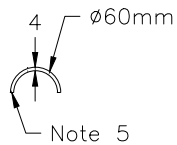
DETAIL A



ELEVATION

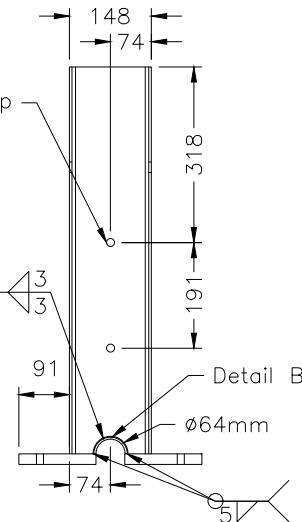
SECTION D-D

DETAIL B



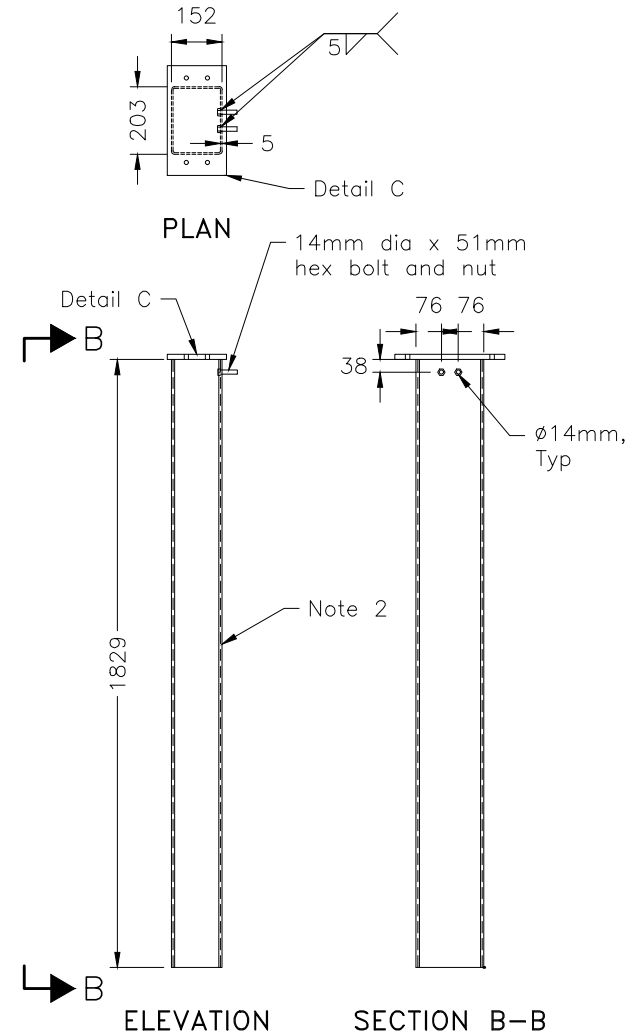
ELEVATION

PLAN



SECTION A-A

UPPER POST ASSEMBLY



ELEVATION

SECTION B-B

LOWER POST ASSEMBLY

NOTES:

- 1 Steel post shall be W152x12.6x699mm or W152x13.4x699mm according to ASTM A992.
  - 2 1829mm long 203x152x5mm TS foundation tube shall be according to ASTM A500 Grade B.
  - 3 Steel plate shall be 140x140x19mm according to ASTM A36.
  - 4 Steel plate shall be 330x178x16mm according to ASTM A36.
  - 5 Post sleeve shall be 60mm diameter x 100mm according to ASTM A53 Grade B (Schedule 40).
- A All dimensions subject to manufacturing tolerances unless otherwise indicated.  
 B All dimensions are in millimetres unless otherwise shown.

MINISTRY OF TRANSPORTATION ONTARIO DRAWING

April 2021

Rev | 0

GUIDE RAIL SYSTEM, STEEL BEAM  
 STEEL POST TERMINAL ANCHORAGE  
 POST COMPONENTS

MTOD 912.263