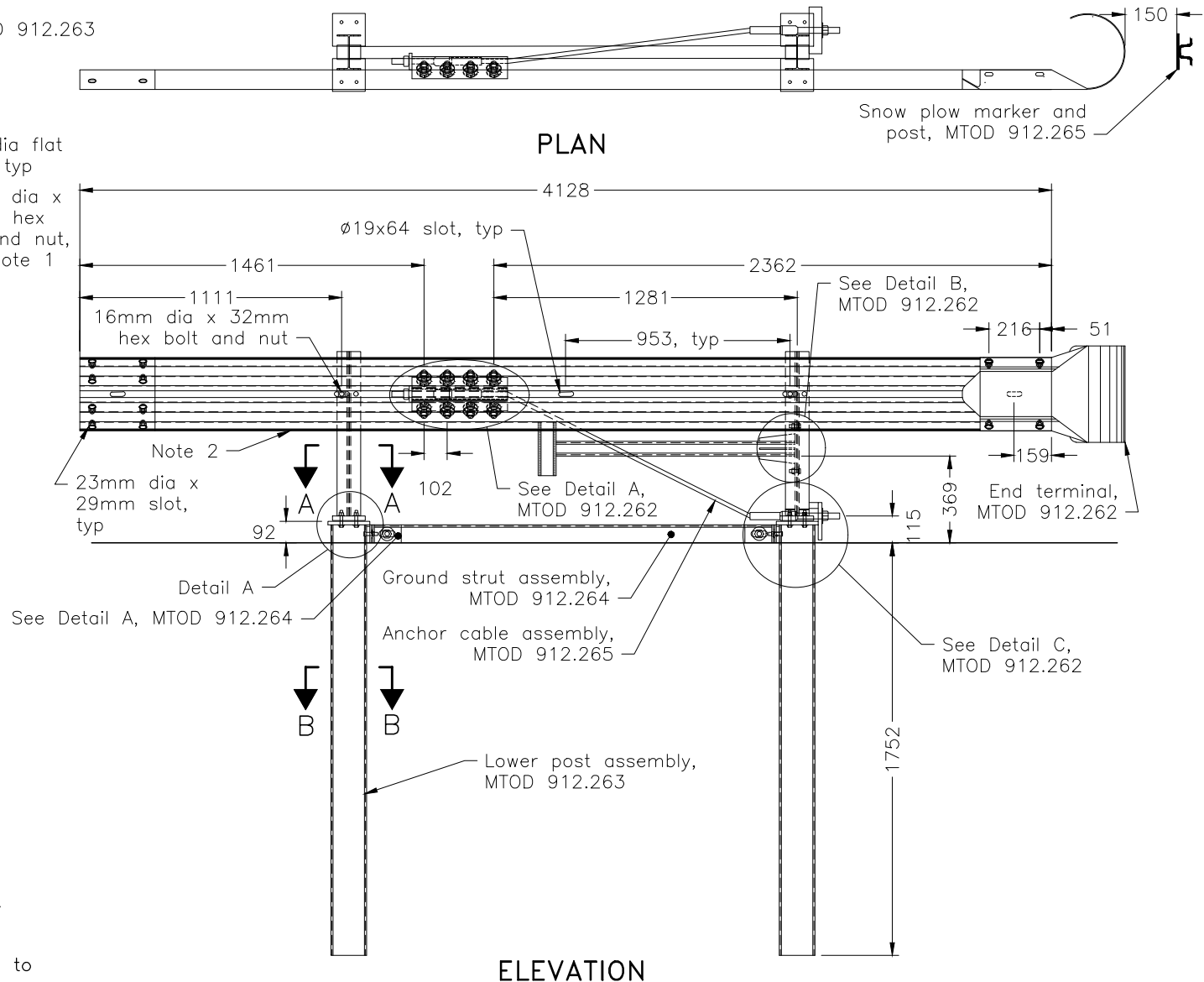


NOTES:

- 1 Vertical through-bolts (D6) are to be torqued approximately 81.3–101.7 N-m.
- 2 Guide rail panel according to OPSD 921.101.
- A Splice and mounting hardware according to OPSD 912.125.
- B This MTOD to be read in conjunction with MTODs 912.261, 912.262, 912.263, 912.264, 912.265, 912.266 and 912.267.
- C All dimensions subject to manufacturing tolerances unless otherwise indicated.
- D System configuration meets AASHTO MASH TL-3.
- E All dimensions are in millimetres unless otherwise shown.



MINISTRY OF TRANSPORTATION ONTARIO DRAWING	April 2021	Rev	0
GUIDE RAIL SYSTEM, STEEL BEAM STEEL POST TERMINAL ANCHORAGE INSTALLATION		-----	
		MTOD 912.261	